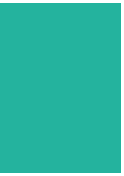


w w w . t u n g a l o y . c o m

NEW MATRIX Series 5



Total management of tools
simplifies inventory control!





MATRIX
TUNGALOY

Centralized inventory control
reduces tooling cost!

MATRIX

TUNGALOY

Total management of tools simplifies inventory control!

● Issuing items

■ No product defect caused by using the wrong tools for the job

- Only the right tools are accessible by the operator.
- Proper operation prevents product recalls as well as waste of machining time and materials.

■ All types of items managed by barcodes

Barcode system delivers quick and accurate issue of items.

Touch screen menu



Screen of "Issue Item"



Accessible to the appropriate item only



● Ordering items

■ Automatic ordering system based on reorder points

Reorder points are calculated automatically.

■ Purchase at the right time

The ordering system prevents items from being out-of-stock and overstocked.

● Storing items

■ Quick and easy placement of a wide range of items

■ Barcodes direct items to the correct bins

Barcode system prevents items from being stored in the wrong place.



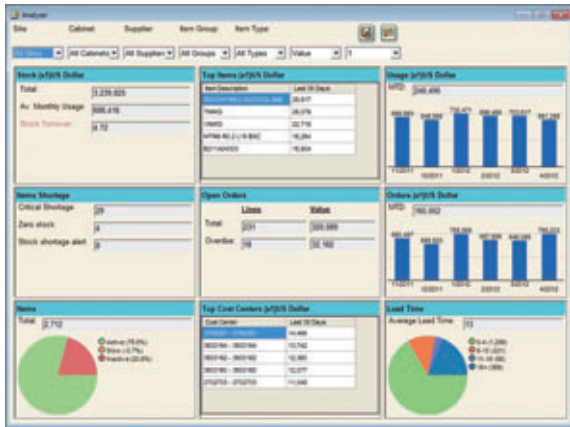
● Excellent inventory management system

■ Secure access with ID devices

- All issuing/storing of items are limited to authorized personnel only.
- Authorization methods:
 - NEW** Fingerprint scanning
 - Log-in password
 - Barcode reader
 - ID card (Magnetic card or RFID reader)

■ Usage history

Issuing/storing of items, change of item master file, and other actions taken on MATRIX are fully recorded in the database.

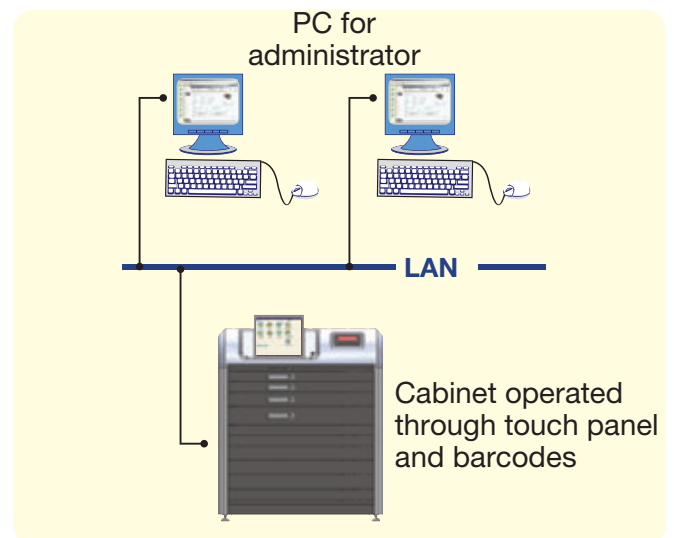


■ Remote control on a PC via LAN

All data is transferred through LAN and can be checked by operator and administrator in real time.

■ Total management for multiple MATRIX's located at different sites

Cabinets without a monitor can be connected together through the network.



Easy-to-use interactive touch panel



Screen of "Issue Item"

Photo/drawing of items can be attached.



● Excellent statistical analysis system

■ Statistical data available for purchasing control and productivity analysis

■ Identification of target for cost reduction

- Data of issued items gives the information from many different angles: By item, user, production line, workpiece material, etc.
- Data also helps find dead stock and items that are hardly used.

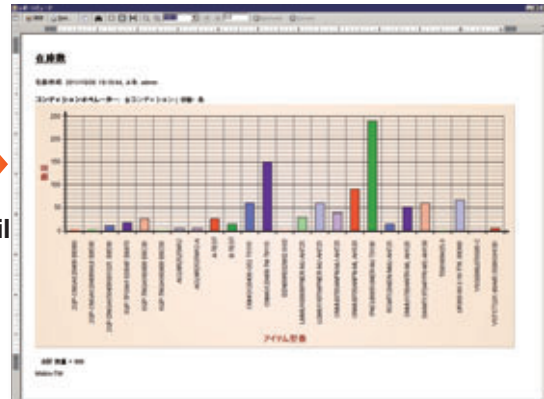
■ Reporting function

All transactions of issuing/storing of items can be viewed in Excel, report, and graph formats, which drastically reduces workload in data management.

Reports are scheduled to be emailed regularly.

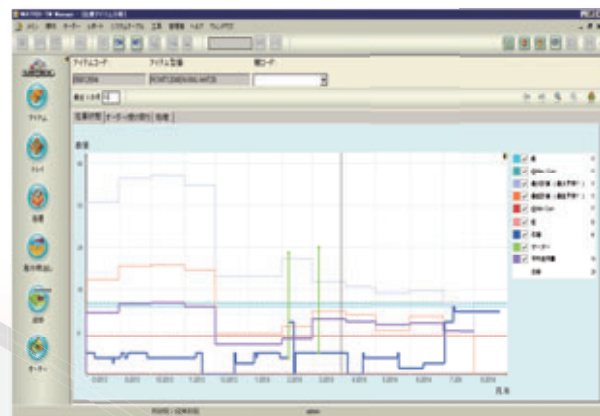
Screen to set up email delivery of reports

Example: Quantity of current inventory in a bar graph



■ Data provided by MATRIX:

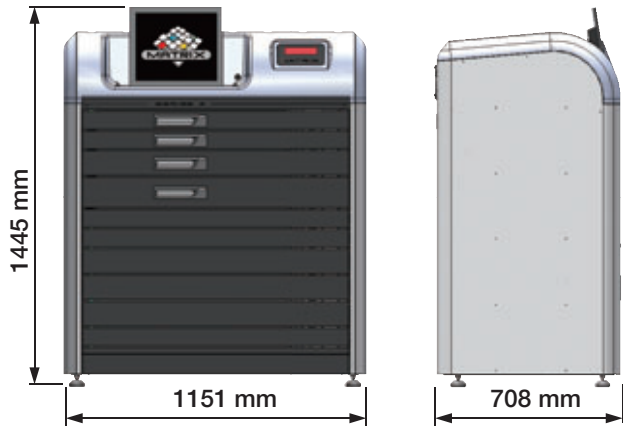
- **Inventory**
Quantity, unit price, total price
- **Usage log**
History of issued/stored items, quantity of items used daily/monthly, average cost/consumption of each item for a certain period
- **Order history**
Record for items ordered in the past
- **Order status**
Items to be ordered/already ordered/received
- **Optimized stock level**
Maximum/minimum stock level calculated automatically based on data of issued items



● Specifications: Cabinets

■ Product line-up in 2 sizes

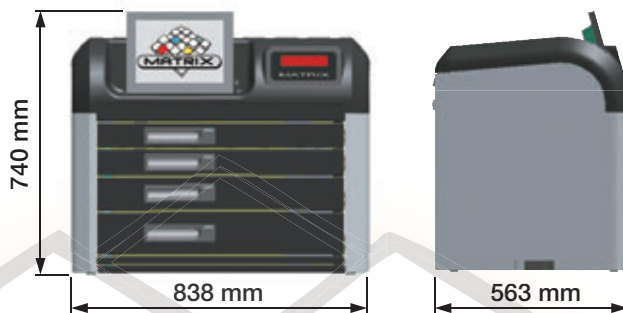
MAXI: Tall cabinet with an enhanced storage capacity



- Maximum weight: Approx. 460 kg (depending on the number of drawers)
- Drawer heights: 50 mm, 75 mm, 100 mm
- Recommended load weight per drawer: 50 kg
- Electrical supply: 110AC \pm 10% 4.6A
- Body: Cabinet frame and drawers are strong against corrosion
- External colors: Black and silver

MINI: Compact cabinet for limited production space

There is no minimum number of drawers required for both MAXI and MINI, so the user receives the exact storage capacity needed.



- Maximum weight: Approx. 120 kg (depending on the number of drawers)
- Drawer heights: 50 mm, 75 mm, 100 mm
- Recommended load weight per drawer: 20 kg
- Electrical supply: 110AC \pm 10% 4.6A
- Body: Cabinet frame and drawers are strong against corrosion
- External colors: Black and silver


Caster wheels are available for MINI



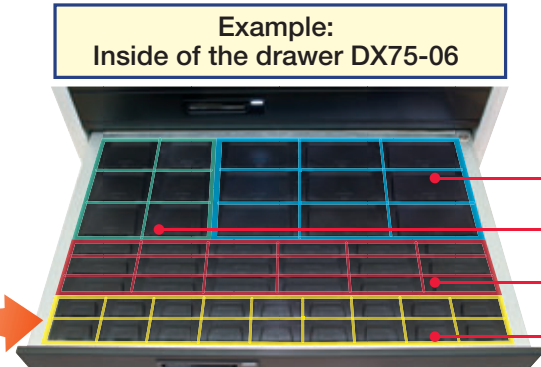
Specifications: Bins and drawers

| Bin code | 50A | 50B | 50C | 50D | 50E | 75B | 75C | 75G | 75H | 75L | 100A | 100J | 100K | 100XL | 100XXL | No. of bins |
|-----------------|----------------|----------------|----------------|-----------------|-----------------|-----------------|----------------|-----------------|-----------------|-----------------|-----------------|-------------------|-------------------|-------------------|-------------------|-------------|
| Pitch DxW | (1x1) | (1x2) | (1x3) | (1x4) | (1x5) | (1x2) | (1x3) | (2x3) | (2x4) | (2x6) | (1x1) | (3x3) | (4x3) | | | |
| Dimensions (mm) | H: D: W: | 50 39 92 | 50 39 92 | 50 39 142 | 50 39 192 | 50 39 242 | 75 39 92 | 75 39 142 | 75 89 192 | 75 89 292 | 100 39 42 | 100 139 142 | 100 189 142 | 100 165 295 | 100 165 445 | |
| DX50-00 | | | | | | | | | | | | | | | | 0 |
| DX50-01 | 198 | | | | | | | | | | | | | | | 198 |
| DX50-02 | 36 | 27 | 12 | 18 | | | | | | | | | | | | 93 |
| DX50-03 | 36 | 15 | 20 | 8 | 8 | | | | | | | | | | | 87 |
| DX50-04 | | 33 | 44 | | | | | | | | | | | | | 77 |
| DX50-05 | | | | 22 | 22 | | | | | | | | | | | 44 |
| DX50-21 | | 99 | | | | | | | | | | | | | | 99 |
| DX50-25 | | | 66 | | | | | | | | | | | | | 66 |
| DX50-31 | | 11 | 44 | 11 | | | | | | | | | | | | 66 |
| DX75-00 | | | | | | | | | | | | | | | | 0 |
| DX75-04 | | | | | | 33 | 44 | | | | | | | | | 77 |
| DX75-06 | | | | | | 18 | 18 | 6 | 9 | | | | | | | 51 |
| DX75-07 | | | | | | | 30 | 6 | 9 | | | | | | | 45 |
| DX75-08 | | | | | | | 6 | 10 | 15 | | | | | | | 31 |
| DX75-21 | | | | | | 99 | | | | | | | | | | 99 |
| DX75-25 | | | | | | | 66 | | | | | | | | | 66 |
| DX75-26 | | | | | | | 6 | 30 | | | | | | | | 36 |
| DX75-30 | | | | | | 45 | 24 | 6 | | | | | | | | 75 |
| DX75-32 | | | | | | | 18 | 24 | | | | | | | | 42 |
| DX75-40 | NEW | | | | | | 6 | 6 | 9 | 6 | | | | | | 27 |
| DX100-00 | | | | | | | | | | | | | | | | 0 |
| DX100-01 | | | | | | | | | | | 198 | | | | | 198 |
| DX100-09 | | | | | | | | | | | 90 | 12 | | | | 102 |
| DX100-10 | | | | | | | | | | | | 6 | 12 | | | 18 |
| DX JUMBO | NEW | | | | | | | | | | | | | 9 | | 9 |
| DX JUMBO | NEW | | | | | | | | | | | | | | 6 | 6 |
| DM50-00 | | | | | | | | | | | | | | | | 0 |
| DM50-11 | 24 | 12 | 8 | 6 | | | | | | | | | | | | 50 |
| DM50-12 | | | 8 | 8 | 8 | | | | | | | | | | | 24 |
| DM50-22 | | | | 24 | | | | | | | | | | | | 24 |
| DM50-23 | 96 | | | | | | | | | | | | | | | 96 |
| DM50-24 | | | 32 | | | | | | | | | | | | | 32 |
| DM50-29 | 24 | 24 | 8 | | | | | | | | | | | | | 56 |
| DM50-39 | NEW | 48 | | | | | | | | | | | | | | 48 |
| DM75-00 | | | | | | | | | | | | | | | | 0 |
| DM75-13 | | | | | | 12 | 8 | 4 | 3 | | | | | | | 27 |
| DM75-14 | | | | | | | 16 | 4 | 3 | | | | | | | 23 |
| DM75-15 | | | | | | 18 | 20 | | | | | | | | | 38 |
| DM75-16 | | | | | | | | 8 | 6 | | | | | | | 14 |
| DM75-24 | | | | | | | 32 | | | | | | | | | 32 |
| DM75-27 | | | | | | 48 | | | | | | | | | | 48 |
| DM100-00 | | | | | | | | | | | | | | | | 0 |
| DM100-17 | | | | | | | | | | | 96 | | | | | 96 |
| DM100-18 | | | | | | | | | | | 24 | 8 | | | | 32 |
| DM100-19 | | | | | | | | | | | | | 8 | | | 8 |

- Drawers available in 3 heights (inner size): 50 mm, 75 mm, 100 mm
- Some drawers come with bins in several sizes as below.
- The layout in each drawer can be changed by selecting different bins. The height of bins and the drawer must be the same. (Please note that the bin that has been attached to a drawer cannot be reinstalled in other drawers.)



Example:
Inside of the drawer DX75-06



| Bin code | Dimensions (mm) | | |
|----------|-----------------|----|-----|
| | H | D | W |
| 75H | 75 | 89 | 192 |
| 75G | 75 | 89 | 142 |
| 75C | 75 | 39 | 142 |
| 75B | 75 | 39 | 92 |

■ Customization to meet users' needs

- **Available in 2 types of cabinets**
 - TOUCH cabinet: Cabinet with a touch screen monitor
 - POD cabinet: Cabinet without a monitor for connection to a TOUCH cabinet
- **Unlimited number of POD cabinets can be connected to a TOUCH cabinet.**
All cabinets are controlled with a PC through the network.
- **Modular system allows the customization of drawers and bins:**
 - The number of drawers per cabinet
 - The height of drawers
 - Layout inside the drawers
 - The size of bins in each drawer



Tungaloy Corporation (Head office)

11-1 Yoshima-Kogyodanchi
Iwaki-city, Fukushima, 970-1144 Japan
Phone: +81-246-36-8501
Fax: +81-246-36-8542
www.tungaloy.co.jp

Tungaloy America, Inc.

3726 N Ventura Drive
Arlington Heights, IL 60004, U.S.A.
Phone: +1-888-554-8394
Fax: +1-888-554-8392
www.tungaloyamerica.com

Tungaloy Canada

432 Elgin St. Unit 3
Brantford, Ontario N3S 7P7, Canada
Phone: +1-519-758-5779
Fax: +1-519-758-5791
www.tungaloy.co.jp/ca

Tungaloy de Mexico S.A.

C Los Arellano 113,
Parque Industrial Siglo XXI
Aguascalientes, AGS, Mexico 20290
Phone: +52-449-929-5410
Fax: +52-449-929-5411
www.tungaloy.co.jp/mx

Tungaloy do Brasil Comércio de Ferramentas de Corte Ltda.

Rua dos Sabias N.104
13280-000 Vinhedo, São Paulo, Brazil
Phone: +55-19-38262757
Fax: +55-19-38262757
www.tungaloy.co.jp/br

Tungaloy Germany GmbH

An der Alten Ziegelei 1
D-40789 Monheim, Germany
Phone: +49-2173-90420-0
Fax: +49-2173-90420-19
www.tungaloy.de

Tungaloy France S.A.S.

ZA Courtaboeuf - Le Rio
1 rue de la Terre de feu
F-91952 Courtaboeuf Cedex, France
Phone: +33-1-6486-4300
Fax: +33-1-6907-7817
www.tungaloy.fr

Tungaloy Italia S.r.l.

Via E. Andolfato 10
I-20126 Milano, Italy
Phone: +39-02-252012-1
Fax: +39-02-252012-65
www.tungaloy.it

Tungaloy Czech s.r.o.

Turanka 115
CZ-627 00 Brno, Czech Republic
Phone: +420-532 123 391
Fax: +420-532 123 392
www.tungaloy.cz

Tungaloy Ibérica S.L.

C/Miquel Servet, 43B, Nau 7
Pol. Ind. Bufalvent
ES-08243 Manresa (BCN), Spain
Phone: +34 93 113 1360
Fax: +34 93 876 2798
www.tungaloy.es

Tungaloy Scandinavia AB

S:t Lars Väg 42A
SE-22270 Lund, Sweden
Phone: +46-462119200
Fax: +46-462119207
www.tungaloy.se

Tungaloy Rus, LLC

36-D Harkovsky Lane
308009 Belgorod, Russia
Phone: +7 4722 24 00 07
Fax: +7 4722 24 00 08
www.tungaloy.co.jp/ru

Tungaloy Polska Sp. z o.o.

ul. Genewska 24
03-963 Warszawa, Poland
Phone: +48-22-617-0890
Fax: +48-22-617-0890
www.tungaloy.co.jp/pl

Tungaloy U.K. Ltd

The Technology Centre,
Wolverhampton Science Park
Glaisher Drive, Wolverhampton
West Midlands WV10 9RU, UK
Phone: +44 121 4000 231
Fax: +44 121 270 9694
www.tungaloy.co.jp/uk
salesinfo@tungaloyuk.co.uk

Tungaloy Hungary Kft

Erzsébet királyné útja 125
H-1142 Budapest, Hungary
Phone: +36 1 781-6846
Fax: +36 1 781-6866
www.tungaloy.co.jp/hu
info@tungaloytools.hu

Tungaloy Turkey

Dudullu, OSB 4. Cad No:4
34776 Umraniye Istanbul, TURKEY
Phone: +90 216 540 04 67
Fax: +90 216 540 04 87
www.tungaloy.com.tr
info@tungaloy.com.tr

Tungaloy Benelux b.v.

Tjalk 70
NL-2411 NZ Bodegraven, Netherlands
Phone: +31 172 630 420
Fax: +31 172 630 429
www.tungaloy-benelux.com

Tungaloy Croatia

Josipa Kozarca 4
10432 Bregana, Croatia
Phone: +385 1 3326 04 04
Fax: +385 1 3327 683
www.tungaloy.hr

Tungaloy Cutting Tool (Shanghai) Co., Ltd.

Rm No 401 No.88 Zhabei
Jiangchang No.3 Rd
Shanghai 200436, China
Phone: +86-21-3632-1880
Fax: +86-21-3621-1918
www.tungaloy.co.jp/tcts

Tungaloy Cutting Tool (Thailand) Co., Ltd.

TCIF Tower 4th Fl.
1858/5-7 Bangna-Trad Road
km.5 Bangna, Bangna, Bangkok 10260
Thailand
Phone: +66-2-751-5711
Fax: +66-2-751-5715
www.tungaloy.co.th

Tungaloy Singapore (Pte.), Ltd.

62 Ubi Road 1, #06-11 Oxley BizHub 2
Singapore 408734
Phone: +65-6391-1833
Fax: +65-6299-4557
www.tungaloy.co.jp/tspl

Tungaloy Vietnam

Unit 18, 4th Fl. Saigon Centre Building
65 Le Loi Blvd.
Dist 1, Ho Chi Minh City, Vietnam
Phone: +84-8-3827-0201
Fax: +84-8-3827-0203
www.tungaloy.co.jp/tspl

Tungaloy India Pvt. Ltd.

Unit#13, B wing, 8th Fl.
Kamala Mills Compound
Trade World, Lower Parel (West)
Mumbai - 4000 13, India
Phone: +91-22-6124-8804
Fax: +91-22-6124-8899
www.tungaloy.co.jp/in

Tungaloy Korea Co., Ltd

#1312, Byucksan Digital Valley 5-cha
Beotkkot-ro 244, Geumcheon-gu
153-788 Seoul, Korea
Phone: +82-2-2621-6161
Fax: +82-2-6393-8952
www.tungaloy.co.jp/kr

Tungaloy Malaysia Sdn Bhd

50 K-2, Kelana Mall, Jalan SS6/14
Kelana Jaya, 47301
Petaling Jaya, Selangor Darul Ehsan
Malaysia
Phone: +603-7805-3222
Fax: +603-7804-8563
www.tungaloy.co.jp/my

Tungaloy Australia Pty Ltd

PO Box 2232, Rowville,
Victoria 3178, Australia
Phone: +61-3-9755-8147
Fax: +61-3-9755-6070
www.tungaloy.com.au

PT. Tungaloy Indonesia

Kompleks Grand Wisata Block AA-10 No.3-5
Cibitung
Bekasi 17510, Indonesia
Phone: +62-21-8261-5808
Fax: +62-21-8261-5809
www.tungaloy.co.jp/id



www.tungaloy.com

follow us at:

facebook.com/tungaloyjapan

twitter.com/tungaloyjapan

To see this product in action visit:

Tung-TV

www.youtube.com/tungaloycorporation

Distributed by:



DOWNLOAD
our App



Available on the
App Store



GET IT ON
Google play



ISO 9001 Certified
QC00J0056
Tungaloy Corporation
18/10/1996

ISO 14001 Certified
EC97J1123
Tungaloy Group
Japan site and Asian
production site
26/11/1997